

1 Palmer Drive



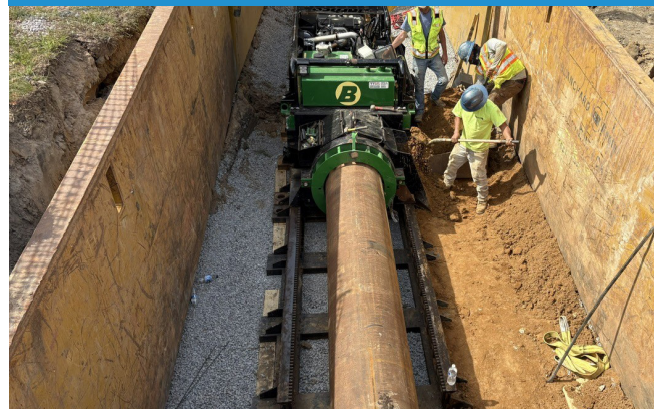
2 Holly Circle Waterline Relocation



3 Paper Mill Road Utility Relocation



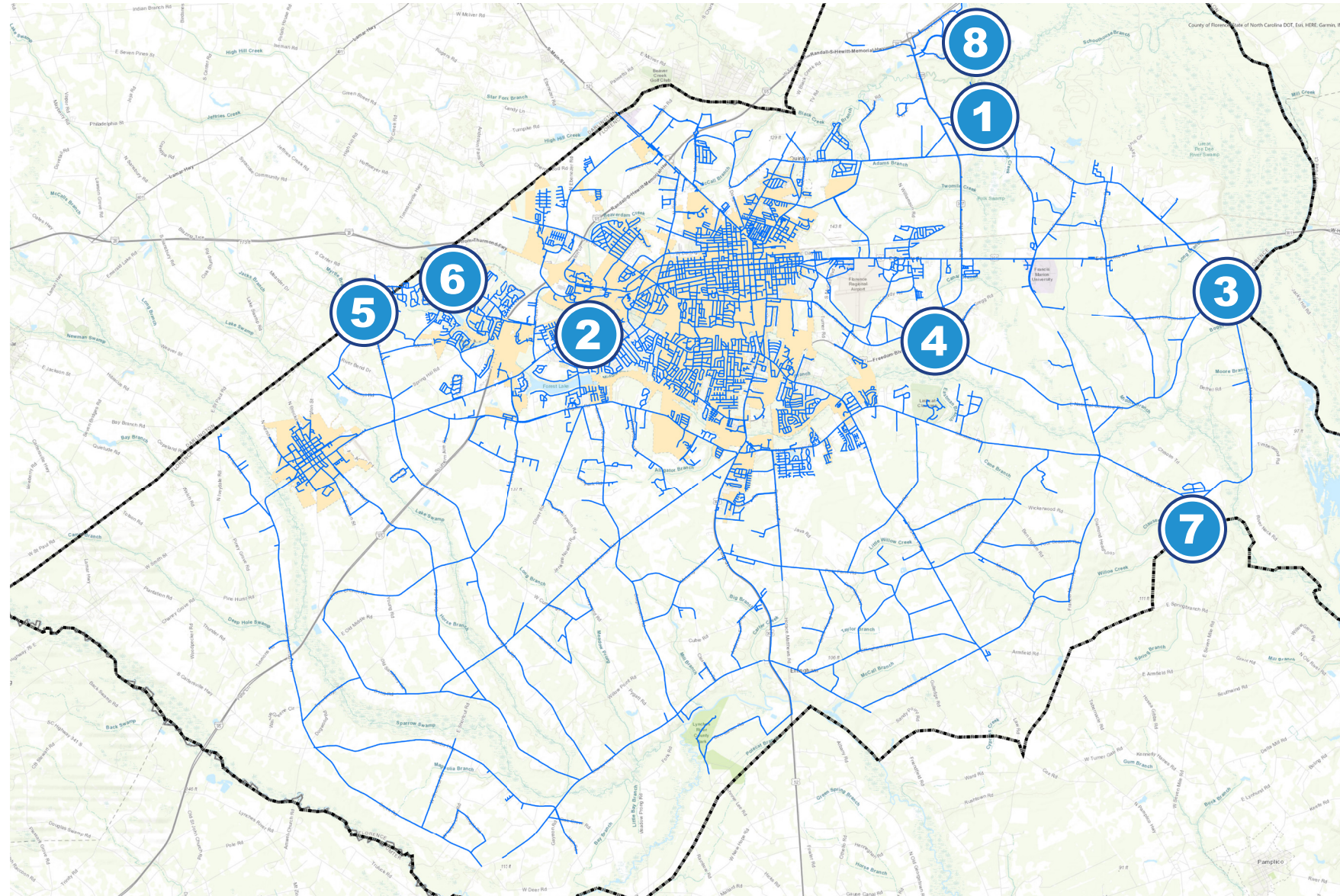
4 Freedom Blvd Waterline Extension



5 SCIP GE Ground Water Treatment Plant Upgrades



6 West Florence Distribution Upgrades



8 Surface Water Plant Expansion



7 SCDOT Bridge Utility Relocation Updates



Pardon our Mess

1 Palmer Drive

UPDATE | The City's Distribution Division replaced approximately 1,700 LF of 6-inch water line along Palmer Drive due to continual issues with prior installed polyvinyl chloride (PVC) pipe.
STATUS | Completed, Summer 2025

2 Holly Circle Waterline Relocation

UPDATE | Relocation of a City water line to accommodate infrastructure and roadway improvements associated with a South Carolina Department of Transportation (SCDOT) road widening project. The water line was relocated outside of the roadway pavement and into the roadside area to improve future maintenance access.
STATUS | Completed, Winter 2025

3 Paper Mill Road Utility Relocation

UPDATE | Relocation of a City water line to support infrastructure and roadway improvements associated with a SCDOT road widening project. The water line was moved out of the roadway pavement and into the roadside area to improve future maintenance access.
STATUS | Completed, Spring 2026

4 Freedom Blvd Waterline Extension

UPDATE | Construction of ~15,700 LF of a new 30-inch water line. This improvement expands the service area and extends the reach of the Pee Dee Surface Water Treatment Plant, increasing system capacity and improving overall water distribution.
STATUS | Construction, Summer 2026

5 SCIIP GE Ground Water Treatment Plant Upgrades

UPDATE | Construction has commenced at the GE Ground Water Treatment Plant for system upgrades to restore the previously decommissioned facility. This work will extend the service area and expand the plant's overall impact, improving system capacity and reliability.
STATUS | Construction, Fall 2026

6 West Florence Distribution Upgrades

UPDATE | Connecting water lines to improve flow capacity for fire protection, water quality, and system pressure. Construction of approximately 31,000 linear feet (LF) of a new 6-inch and 12-inch water lines has been completed.
STATUS | Completed, Winter 2026

7 SCDOT Bridge Utility Relocation Updates

UPDATE | SCDOT is replacing bridges, and the existing water lines are being proactively relocated to support improvements. The relocation will improve long-term access.
STATUS | Planning, TBD

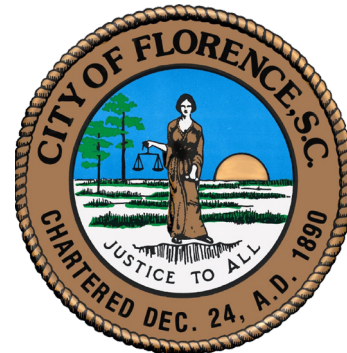
8 Surface Water Plant Expansion

UPDATE | Expanding the Pee Dee Surface Water Treatment Facility from 10 to 15 million gallons per day to help meet future water needs, improve reliability, and extend the facility's service life by an estimated 20 years. A filter high-rating study has been submitted to SC Department of Environmental Services (SCDES) for permitting approval.
STATUS | Permitting, Winter 2029

Stay Connected



RISE
Resilient Infrastructure
and System Enhancements



Investing Today. | Building Tomorrow. | Serving our Community.



RESILIENT
Building stronger systems for the future.



INFRASTRUCTURE
Upgrading and renewing critical water, sewer, and stormwater assets.



SYSTEM
Improving performance, reliability and operational efficiency.



ENHANCEMENTS
Enhancing service for a healthier and stronger community.



Scan the QR code
to learn more!